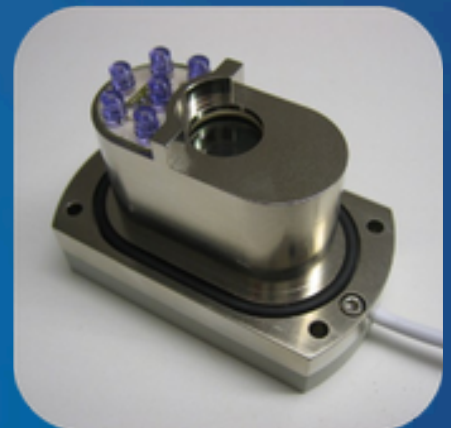


DEBEN:

DATASHEET: SEM CHAMBERSCOPE

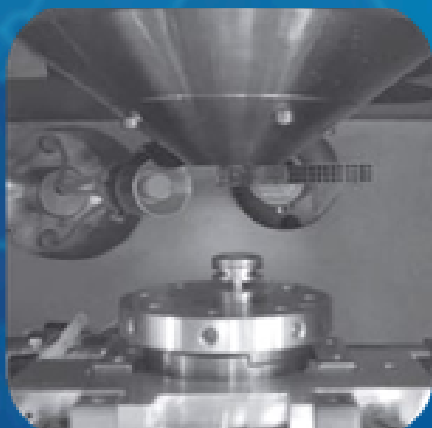


Features:

- Monitor or USB Versions Available
- Dual or Single Options
- Available For Most SEMs

By fitting a Deben Chamberscope to your SEM you can get an instant view inside the chamber to see the position of detectors and samples. A Chamberscope is an essential accessory for any SEM - hitting a detector with a large sample can be an expensive mistake.

The **monitor** system allows for easy positioning of the control box on the SEM console and manual adjustment of chamber illumination using push buttons on the front panel. The **USB** system allows for integrated installation on the SEM PC and is Windows compatible.

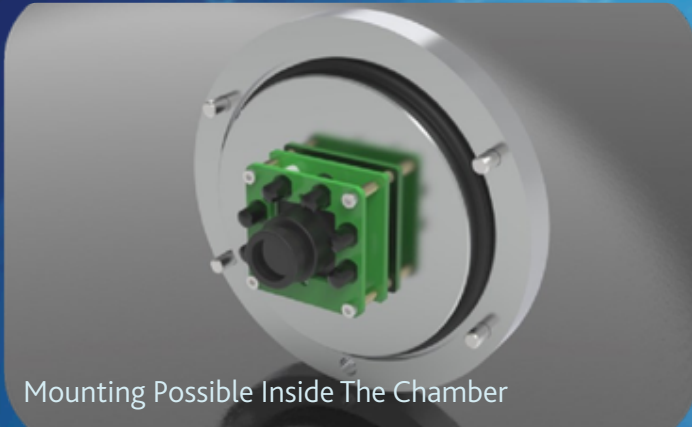


Two separate Chamberscopes can be connected to provide different chamber views.

Advantages:

- Faster beam blanking than conventional in-built systems
- Compact and robust design
- Designed for compatibility with various SEMs

DEBEN:



Mounting Possible Inside The Chamber



External Mounting Available

Deben Chamberscopes are supplied with **wide and narrow** angle lenses to allow field of view to be chosen at installation or changed by the user at a later date.

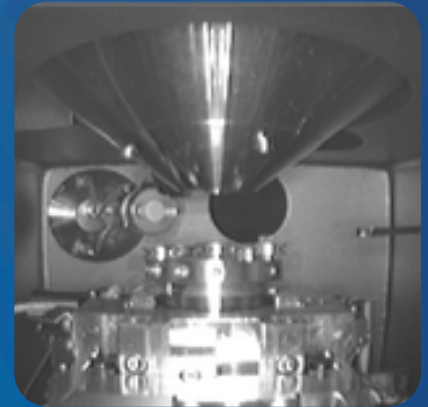
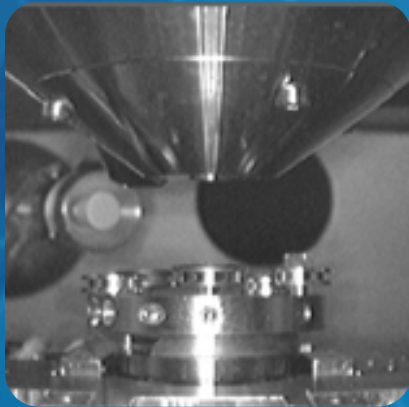
Chamberscopes are easily disabled for BSE imaging.

Additional Features

- Adjustable Infra-Red (IR) LED Illumination
- Exchangeable Lenses
- X-Ray Shielded & With Heat Sink

USB Version Features:

- Select single or multiple video inputs
- Images can be saved in .BMP, videos in .AVI formats
- Tilt angle measurement (Benchtop SEMs only)



System Specifications:

- Available in monitor or USB versions
- Versions to fit all common SEM chamber ports
- 2x Deben chamberscope inputs
- One composite video input
- Illumination: by Infra-red diodes @ 890nm
- Monitor: 7.0" TFT
- X-Ray protection tested & OEM approved
- Interchangeable lenses
- Auto power saving
- Power requirement: 90 - 250V
- NTSC/CCIR video compatible
- CE & RoHS compliant